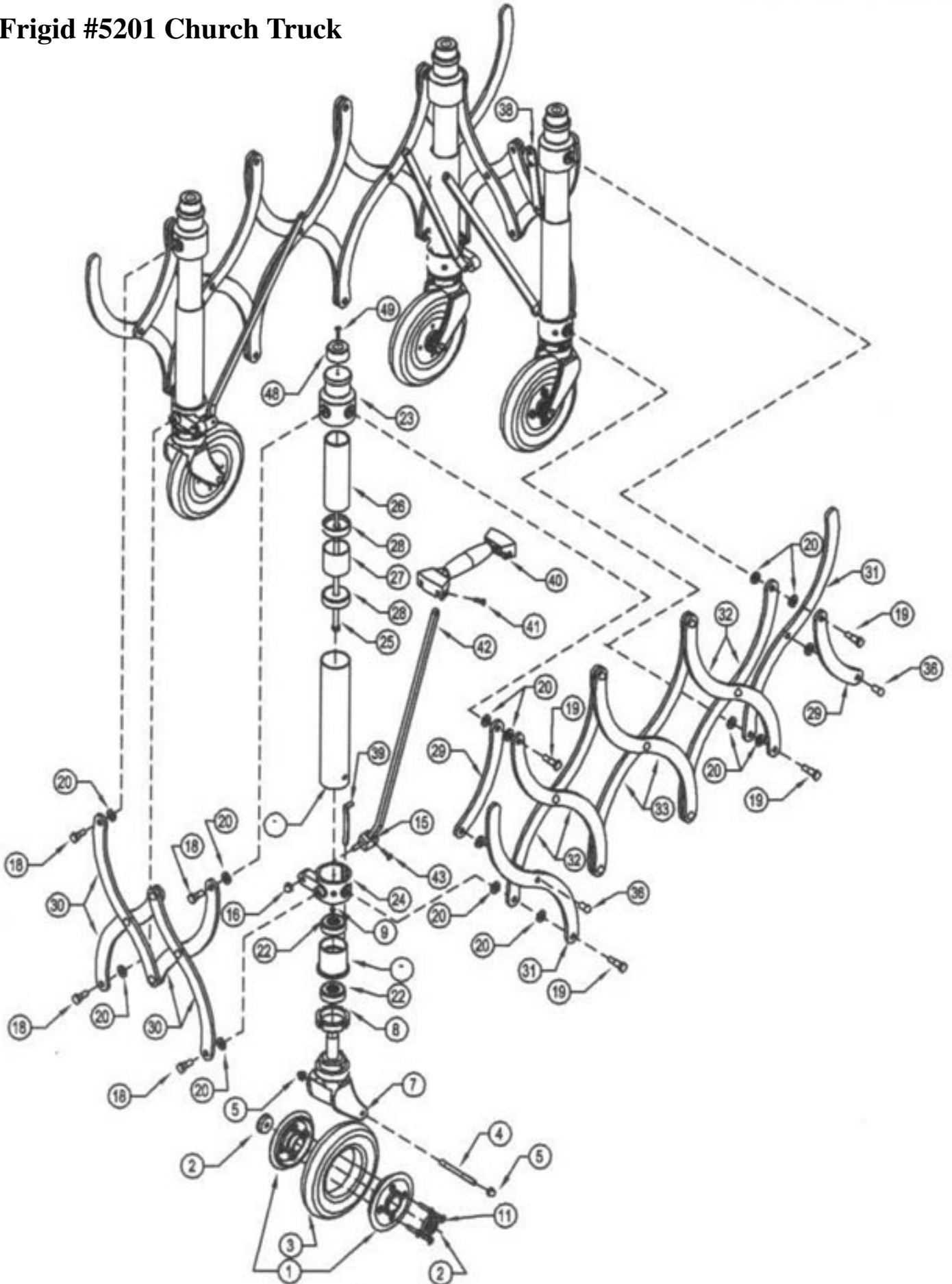


Frigid #5201 Church Truck



#5201 Church Truck Parts

Number	Part #	Description
1	4-CTW01	ALUMINUM RIM
2	4-CTW02	BEARING FOR RIM
3	4-CTW03	RUBBER TIRE
4	4-CTW04	AXLE
5	4-CTW05	CAP NUT FOR AXLE
7	4-CTP03	FORK ASSEMBLY COMPLETE (LESS WHEEL)
8	4-CTP03C	FORK LOCKING RING
9	4-CTP03D	8-32 X 1/2 OVAL HEAD SCREW
11	4-CTW07	ALUMINUM RIM SCREWS
15	4-CTP04	SWIVEL ON BOTTOM GUIDE
16	4-CTP05	CAP NUT FOR SWIVEL
18	4-CTP07	END GUIDE BAR BOLT (FOR TRUCK MADE 1998-PRESENT. BOLTS FOR OLDER TRUCKS NOT AVAIL. CALL FOR DETAILS.)
19	4-CTP08	SIDE GUIDE BAR BOLT (FOR TRUCK MADE 1998-PRESENT. BOLTS FOR OLDER TRUCKS NOT AVAIL. CALL FOR DETAILS.)
20	4-CTP09	FIBER WASHER
22	4-CTP11	POST BEARING
23	4-CTP12LE or 4-CTP12RI	TOP GUIDE LEFT OR RIGHT (SPECIFY)
24	4-CTP13	BOTTOM GUIDE RIGHT OR LEFT (SPECIFY)
25	4-CTP14	INSIDE GUIDE BOLT, 9.5" LONG
26	4-CTP01A	5.5" ALUMINUM TUBE
27	4-CTP01B	2" ALUMINUM SPACER TUBE
28	4-CTP01D	SPACER
29	4-CTB01	8.25" BAR
30	4-CTB02	11.5" BAR
31	4-CTB03	16.5" BAR
32	4-CTB04	17" BAR
33	4-CTB05	18.5" BAR
36	4-CTB08	BAR RIVETS
38	4-CTB10	CHILD ATTACHMENT
39	4-CTB11	WHEEL LOCK
40	4-CTH01	HANDLE
41	4-CTH02	HANDLE SCREWS & HANDLE BAR SUPPORT SCREWS
42	4-CTH03	HANDLE BAR, 16"
43	4-CTH02	HANDLE SCREWS & HANDLE BAR SUPPORT SCREWS
48	4-CTR05	RUBBER BUMPER
49	4-CTR06	RUBBER BUMPER SELF-TAPPING SCREW